

## Test tubes, disposable

Round bottomed for easy sample removal. Made from optically clear Polystyrene or Polypropylene for chemical and thermal resistance. Supplied non sterile.

Cat No.	Code	Description	Pack Qty
TT/52002	2052-003	12x75mm in PS for clinical applications inc FACS	3000
TT/52004	2056-000	13x75mm in PS for clinical analysers	4000
TT/52006	2025-001	13x100mm in PS for auto-samplers inc ICPs	1000
TT/52008	2026-001	13x100mm in PP for auto-samplers inc ICPs	1000
TT/52010	2046-500B	16x100mm in PS for auto-samplers and urinalysis	2000
TT/52012	2047-500G	16x100mm in PP for auto-analysers	2000
TT/52014	2017-001	17x100mm in PS, graduated for urinalysis	1000
TT/52016	2018-001	17x100mm in PP, graduated	1000

## Caps, test tube

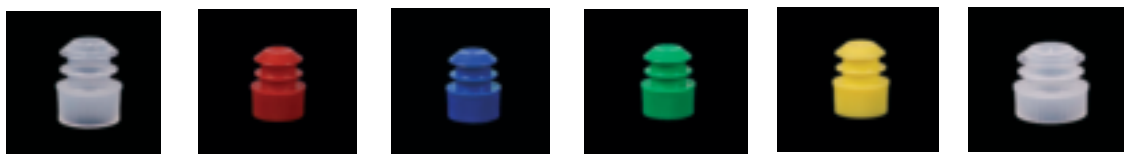
Available in two styles to suit application and user preferences. Manufactured from virgin polyethylene and supplied in a pack of 1000.

### Ezee-topper™ Caps



Cat No.	TT/52102	TT/52104	TT/52106	TT/52108	TT/52110	TT/52114
Tube OD, mm	13	13	13	13	13	16
Colour	Natural	Red	Blue	Green	Yellow	Natural

### Flange Plug Tite Caps



Cat No.	TT/52116	TT/52118	TT/52120	TT/52122	TT/52124	TT/52128
Tube OD, mm	12- 13	12-13	12-13	12-13	12-13	15.4
Colour	Natural	Red	Blue	Green	Yellow	Natural

## Test tubes, round base, disposable, PS

Round base, non sterile, polystyrene test tubes.

Cat. No.	Code	Description	Inner pack	Case qty
TT/16602	RT15	Round base tube 40x6mm	1000	10000
TT/16604	RT20	Round base tube 50x6mm	1000	10000
TT/16606	RT25	Round base tube 65x10mm	500	6000
TT/16608	RT30	Round base tube 75x12mm	250	3500
TT/16610	C2A	Cap for RT30 PE	3500	3500

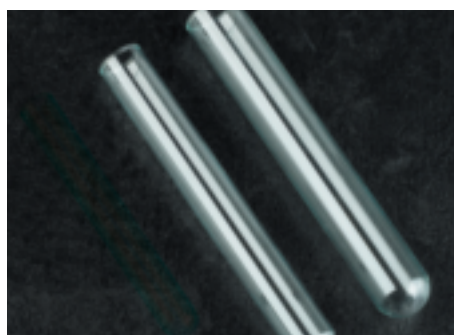


TT/166

## Test tubes, round base, disposable, PS

Crystal clear polystyrene, non sterile, round base, rimless test tubes.

Cat. No.	Description	Pk qty
TT/16622	Rimless test tube 64x11mm	2500
TT/16626	Rimless test tube 75x13 mm	2000
TT/16628	Rimless test tube 95x16 mm	1000



TT/1662